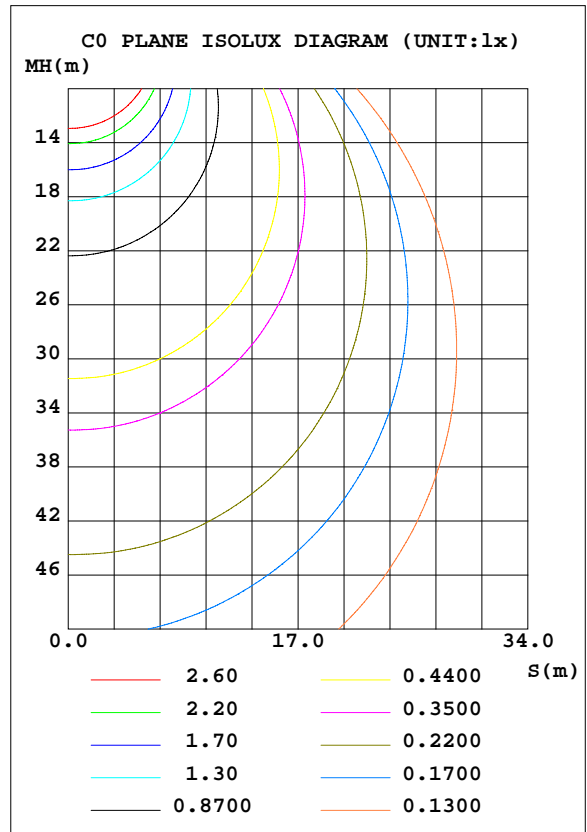
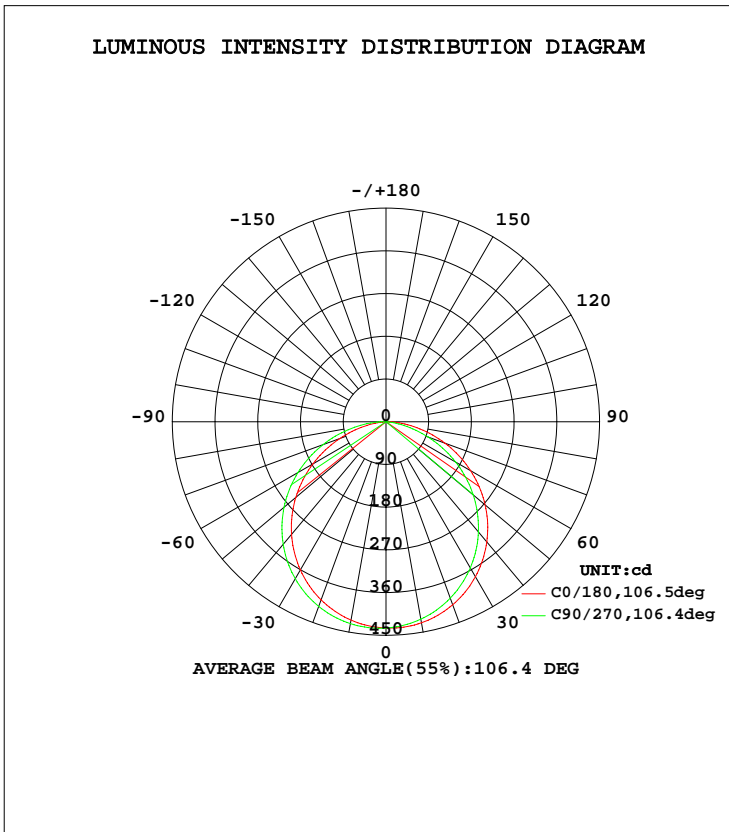


LUMINAIRE PHOTOMETRIC TEST REPORT

Test:U:120.7V I:0.1329A P:14.96W PF:0.9323 Lamp Flux:1247.86x1 lm		
NAME: 7.5吸顶灯-5000k	TYPE:	WEIGHT:
DIM.:	SPEC.:	SERIAL No.:
MFR.:	SUR.:	PROTECTION ANGLE:

DATA OF LAMP		PHOTOMETRIC DATA Eff: 83.41 lm/W			
MODEL	5000K	I _{max} (cd)	436.2	S/MH(C0/180)	1.29
NOMINAL POWER(W)	14	LOR(%)	100.0	S/MH(C90/270)	1.22
RATED VOLTAGE(V)	120	TOTAL FLUX(lm)	1247.9	η UP, DN(C0-180)	0.1, 47.7
NOMINAL FLUX(lm)	1247.86	CIE CLASS	DIRECT	η UP, DN(C180-360)	0.2, 52.0
LAMPS INSIDE	1	η up(%)	0.3	CIBSE SHR NOM	1.25
TEST VOLTAGE(V)	120.7	η down(%)	99.7	CIBSE SHR MAX	1.35



C Range: 0 - 360DEG
 C Interval: 45.0DEG
 Test Speed: HIGH
 Temperature:25.3DEG
 Operators:

γ Range: 0 - 180DEG
 γ Interval: 1.0DEG
 Test System:EVERFINE GO-2000A_V1 SYSTEM V2.0.276
 Humidity:65.0%
 Test Distance:9.100m [K=1.0000]

Test Date:2023-11-02Remarks:

ZONAL FLUX DIAGRAM

ZONAL FLUX DIAGRAM:

γ	C0	C45	C90	C135	C180	C225	C270	C315	γ	Φ zone	Φ total	Flum,lamp
10	430.1	426.3	422.3	420.5	424.4	427.7	431.9	433.4	0- 10	41.13	41.13	3.3,3.3
20	410.6	403.5	395.6	392.1	399.5	406.4	414.1	417.5	10- 20	117.9	159.1	12.7,12.7
30	376.9	366.9	355.5	350.5	360.6	370.8	382.1	387.2	20- 30	179.1	338.1	27.1,27.1
40	330.4	317.5	302.9	296.6	309.7	322.8	337.0	343.4	30- 40	216.3	554.5	44.4,44.4
50	272.7	257.5	240.0	232.7	248.0	263.5	280.4	287.9	40- 50	224.7	779.1	62.4,62.4
60	205.5	188.7	169.3	160.7	178.0	195.6	214.3	222.7	50- 60	202.8	981.9	78.7,78.7
70	132.3	114.9	94.43	85.37	103.5	122.0	141.2	150.0	60- 70	153.5	1135	91,91
80	59.50	44.70	27.70	20.69	34.93	50.60	67.41	74.95	70- 80	86.34	1222	97.9,97.9
90	2.825	0.1166	0.1250	0.1334	0.1417	0.1430	6.033	13.12	80- 90	22.73	1244	99.7,99.7
100	0.1496	0.1749	0.1582	0.2334	0.2497	0.1498	0.1918	0.1333	90-100	0.5240	1245	99.8,99.8
110	0.1995	0.2913	0.2830	0.3584	0.4073	0.2912	0.3171	0.2249	100-110	0.2470	1245	99.8,99.8
120	0.3076	0.4162	0.4332	0.4917	0.5490	0.4493	0.4835	0.3748	110-120	0.3618	1246	99.8,99.8
130	0.4406	0.5742	0.5750	0.6335	0.6984	0.5742	0.6251	0.5497	120-130	0.4545	1246	99.9,99.9
140	0.5985	0.6990	0.6917	0.7501	0.8396	0.7155	0.7587	0.6910	130-140	0.4998	1247	99.9,99.9
150	0.7147	0.8073	0.8416	0.8917	0.9561	0.8405	0.8917	0.8083	140-150	0.4858	1247	99.9,99.9
160	0.8479	0.9321	0.9499	1.008	1.064	0.9653	1.000	0.9000	150-160	0.4147	1247	100,100
170	0.9725	1.040	1.017	1.117	1.131	1.032	1.092	0.9751	160-170	0.2832	1248	100,100
180	1.114	1.132	1.117	1.092	1.131	1.123	1.117	1.058	170-180	0.1016	1248	100,100
DEG	LUMINOUS INTENSITY:cd									UNIT:lm		

C Range: 0 - 360DEG

C Interval: 45.0DEG

Test Speed: HIGH

Temperature:25.3DEG

Operators:

Test Date:2023-11-02Remarks:

γ Range: 0 - 180DEG

γ Interval: 1.0DEG

Test System:EVERFINE GO-2000A_V1 SYSTEM V2.0.276

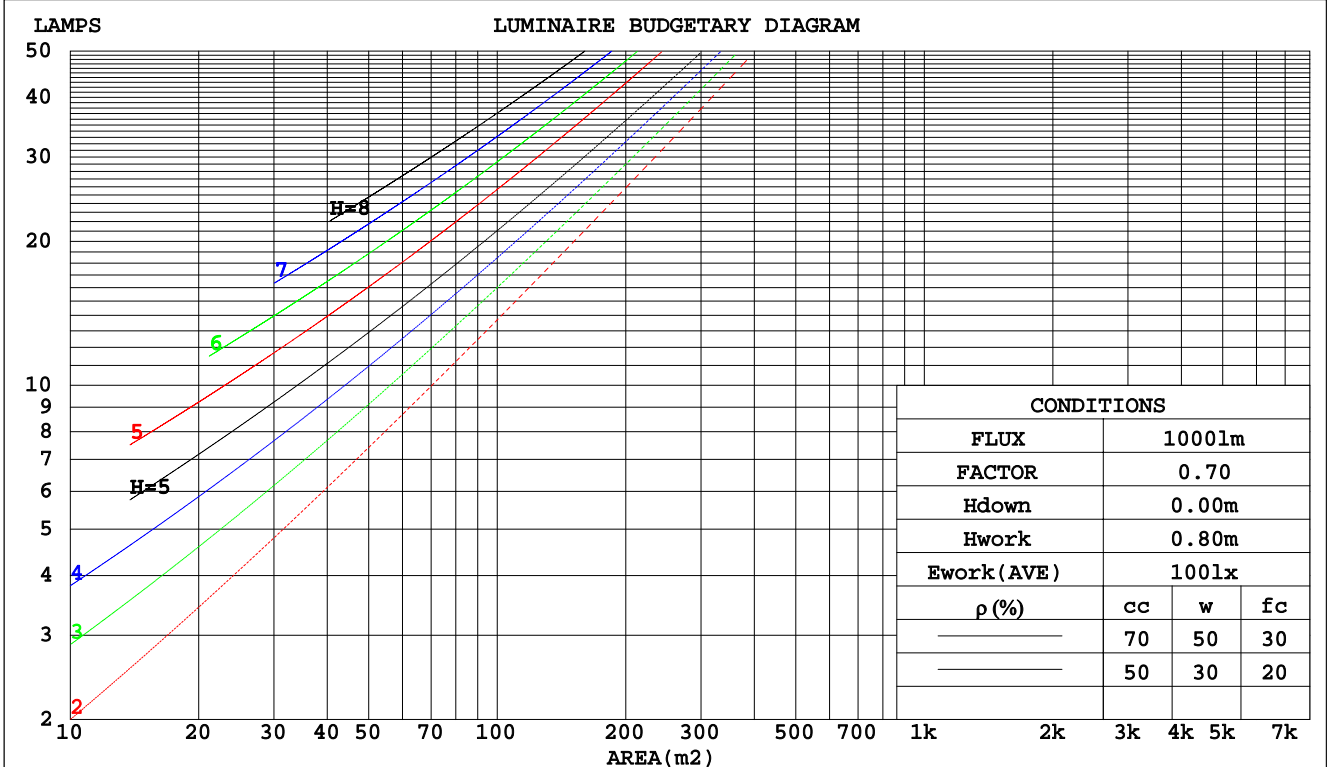
Humidity:65.0%

Test Distance:9.100m [K=1.0000]

CU AND LUMINAIRE BUDGETARY ESTIMATE DIAGRAM

Test:U:120.7V I:0.1329A P:14.96W PF:0.9323 Lamp Flux:1247.86x1 lm		
NAME: 7.5吸顶灯-5000k	TYPE:	WEIGHT:
DIM.:	SPEC.:	SERIAL No.:
MFR.:	SUR.:	PROTECTION ANGLE:

pcc	80%			70%			50%			30%			10%			0
	50%	30%	10%	50%	30%	10%	50%	30%	10%	50%	30%	10%	50%	30%	10%	0
pw																0
pfc																0
RCR	RCR:Room Cavity Ratio															
	Coefficients of Utilization(CU)															
0.0	1.19	1.19	1.19	1.16	1.16	1.16	1.11	1.11	1.11	1.06	1.06	1.06	1.02	1.02	1.02	.00
1.0	1.04	.00	.96	1.02	.98	.94	.97	.94	.91	.93	.91	.88	.90	.88	.86	.83
2.0	.90	.84	.78	.89	.82	.77	.85	.80	.75	.82	.77	.73	.79	.75	.72	.69
3.0	.79	.71	.65	.78	.70	.64	.75	.68	.63	.72	.66	.62	.69	.65	.61	.58
4.0	.70	.61	.55	.69	.61	.54	.66	.59	.53	.64	.58	.53	.62	.56	.52	.50
5.0	.63	.54	.47	.62	.53	.47	.59	.52	.46	.57	.51	.46	.55	.50	.45	.43
6.0	.56	.47	.41	.55	.47	.41	.54	.46	.40	.52	.45	.40	.50	.44	.40	.38
7.0	.51	.42	.36	.50	.42	.36	.49	.41	.36	.47	.40	.35	.46	.40	.35	.33
8.0	.47	.38	.32	.46	.38	.32	.45	.37	.32	.43	.37	.32	.42	.36	.31	.30
9.0	.43	.35	.29	.42	.34	.29	.41	.34	.29	.40	.33	.29	.39	.33	.28	.27
10.0	.39	.32	.26	.39	.31	.26	.38	.31	.26	.37	.30	.26	.36	.30	.26	.24



C Range: 0 - 360DEG
 C Interval: 45.0DEG
 Test Speed: HIGH
 Temperature: 25.3DEG
 Operators:

γ Range: 0 - 180DEG
 γ Interval: 1.0DEG
 Test System: EVERFINE GO-2000A_V1 SYSTEM V2.0.276
 Humidity: 65.0%
 Test Distance: 9.100m [K=1.0000]

Test Date: 2023-11-02 Remarks:

WEC AND CCEC

Test:U:120.7V I:0.1329A P:14.96W PF:0.9323 Lamp Flux:1247.86x1 lm		
NAME: 7.5吸顶灯-5000k	TYPE:	WEIGHT:
DIM.:	SPEC.:	SERIAL No.:
MFR.:	SUR.:	PROTECTION ANGLE:

ρcc	80%			70%			50%			30%			10%			0
ρw	50%	30%	10%	50%	30%	10%	50%	30%	10%	50%	30%	10%	50%	30%	10%	0
ρfc	20%			20%			20%			20%			20%			0
RCR	RCR:Room Cavity Ratio						Wall Exitance Coefficients(WEC)									
0.0																
1.0	.309	.176	.056	.302	.172	.055	.288	.165	.053	.276	.159	.051	.265	.153	.049	
2.0	.291	.160	.049	.285	.157	.048	.273	.152	.047	.262	.147	.046	.252	.143	.045	
3.0	.270	.144	.043	.264	.141	.043	.254	.137	.042	.244	.134	.041	.235	.130	.040	
4.0	.249	.129	.038	.244	.128	.038	.235	.125	.037	.226	.121	.037	.218	.119	.036	
5.0	.230	.117	.034	.226	.116	.034	.218	.113	.033	.210	.111	.033	.203	.108	.033	
6.0	.214	.107	.031	.210	.106	.030	.202	.104	.030	.195	.102	.030	.189	.100	.030	
7.0	.199	.098	.028	.195	.097	.028	.189	.095	.027	.183	.094	.027	.177	.092	.027	
8.0	.186	.091	.026	.183	.090	.025	.177	.088	.025	.171	.087	.025	.166	.085	.025	
9.0	.174	.084	.024	.171	.083	.023	.166	.082	.023	.161	.081	.023	.156	.079	.023	
10.0	.164	.078	.022	.161	.078	.022	.156	.077	.022	.152	.075	.021	.148	.074	.021	

ρcc	80%			70%			50%			30%			10%			0
ρw	50%	30%	10%	50%	30%	10%	50%	30%	10%	50%	30%	10%	50%	30%	10%	0
ρfc	20%			20%			20%			20%			20%			0
RCR	RCR:Room Cavity Ratio						Ceiling Cavity Exitance Coefficients(CCEC)									
0.0	.193	.193	.193	.165	.165	.165	.112	.112	.112	.065	.065	.065	.021	.021	.021	
1.0	.182	.158	.137	.156	.136	.117	.107	.093	.081	.061	.054	.047	.020	.017	.015	
2.0	.174	.134	.100	.149	.115	.087	.102	.080	.060	.059	.046	.035	.019	.015	.012	
3.0	.167	.116	.076	.143	.100	.066	.098	.070	.046	.057	.041	.027	.018	.013	.009	
4.0	.159	.103	.060	.136	.089	.053	.094	.062	.037	.054	.036	.022	.017	.012	.007	
5.0	.152	.093	.049	.130	.080	.043	.090	.056	.030	.052	.033	.018	.017	.011	.006	
6.0	.144	.084	.041	.124	.073	.036	.086	.051	.025	.050	.030	.015	.016	.010	.005	
7.0	.138	.077	.035	.118	.067	.031	.082	.047	.022	.047	.028	.013	.015	.009	.004	
8.0	.131	.072	.031	.113	.062	.027	.078	.044	.019	.045	.026	.011	.015	.008	.004	
9.0	.125	.067	.027	.108	.058	.024	.075	.041	.017	.043	.024	.010	.014	.008	.003	
10.0	.119	.062	.025	.103	.054	.021	.071	.038	.015	.042	.023	.009	.013	.007	.003	

C Range: 0 - 360DEG
 C Interval: 45.0DEG
 Test Speed: HIGH
 Temperature:25.3DEG
 Operators:

γ Range: 0 - 180DEG
 γ Interval: 1.0DEG
 Test System:EVERFINE GO-2000A_V1 SYSTEM V2.0.276
 Humidity:65.0%
 Test Distance:9.100m [K=1.0000]

Test Date:2023-11-02Remarks:

Uncorrected UGR Table

Test:U:120.7V I:0.1329A P:14.96W PF:0.9323 Lamp Flux:1247.86x1 lm										
NAME: 7.5吸顶灯-5000k					TYPE:			WEIGHT:		
DIM.:					SPEC.:			SERIAL No.:		
MFR.:					SUR.:			PROTECTION ANGLE:		
ceiling/cavity	0.7	0.7	0.5	0.5	0.3	0.7	0.7	0.5	0.5	0.3
walls	0.5	0.3	0.5	0.3	0.3	0.5	0.3	0.5	0.3	0.3
working plane	0.2	0.2	0.2	0.2	0.2	0.2	0.2	0.2	0.2	0.2
Room dimensions	Viewed crosswise					Viewed endwise				
x = 2H y = 2H	14.3	15.8	14.6	16.0	16.2	13.6	15.1	13.9	15.3	15.5
3H	15.9	17.3	16.2	17.5	17.8	14.9	16.3	15.2	16.5	16.8
4H	16.6	17.9	16.9	18.2	18.4	15.3	16.6	15.6	16.9	17.1
6H	17.1	18.3	17.4	18.6	18.9	15.5	16.7	15.8	17.0	17.3
8H	17.2	18.5	17.6	18.7	19.0	15.5	16.7	15.8	17.0	17.3
12H	17.4	18.5	17.7	18.8	19.1	15.5	16.6	15.8	16.9	17.2
4H 2H	14.8	16.2	15.1	16.4	16.7	14.3	15.6	14.6	15.9	16.1
3H	16.6	17.8	17.0	18.1	18.4	15.7	16.9	16.1	17.2	17.5
4H	17.4	18.5	17.8	18.8	19.1	16.3	17.3	16.7	17.7	18.0
6H	18.0	19.0	18.4	19.3	19.7	16.6	17.5	17.0	17.9	18.2
8H	18.3	19.1	18.7	19.5	19.9	16.6	17.5	17.0	17.9	18.3
12H	18.4	19.2	18.9	19.6	20.0	16.6	17.4	17.0	17.8	18.2
8H 4H	17.6	18.5	18.0	18.8	19.2	16.6	17.5	17.0	17.8	18.2
6H	18.3	19.1	18.8	19.5	19.9	17.0	17.7	17.5	18.2	18.6
8H	18.7	19.3	19.1	19.7	20.2	17.1	17.8	17.6	18.2	18.6
12H	18.9	19.5	19.4	19.9	20.4	17.1	17.7	17.6	18.1	18.6
12H 4H	17.6	18.4	18.0	18.8	19.2	16.6	17.4	17.0	17.8	18.2
6H	18.4	19.0	18.8	19.4	19.9	17.1	17.7	17.5	18.2	18.6
8H	18.7	19.3	19.2	19.7	20.2	17.2	17.8	17.7	18.2	18.7
Variations with the observer position at spacings:										
S = 1.0H	+ 0.1 / - 0.2					+ 0.2 / - 0.3				
1.5H	+ 0.2 / - 0.3					+ 0.2 / - 0.4				
2.0H	+ 0.2 / - 0.3					+ 0.2 / - 0.4				

CIE Pub.117 Corrected 1248 lm Total Lamp Luminous Flux.(8log(F/F0) = 0.8)

C Range: 0 - 360DEG
 C Interval: 45.0DEG
 Test Speed: HIGH
 Temperature:25.3DEG
 Operators:

γ Range: 0 - 180DEG
 γ Interval: 1.0DEG
 Test System:EVERFINE GO-2000A_V1 SYSTEM V2.0.276
 Humidity:65.0%
 Test Distance:9.100m [K=1.0000]

Test Date:2023-11-02Remarks:

UTILIZATION FACTORS TABLE

Test:U:120.7V I:0.1329A P:14.96W PF:0.9323 Lamp Flux:1247.86x1 lm		
NAME: 7.5吸顶灯-5000k	TYPE:	WEIGHT:
DIM.:	SPEC.:	SERIAL No.:
MFR.:	SUR.:	PROTECTION ANGLE:

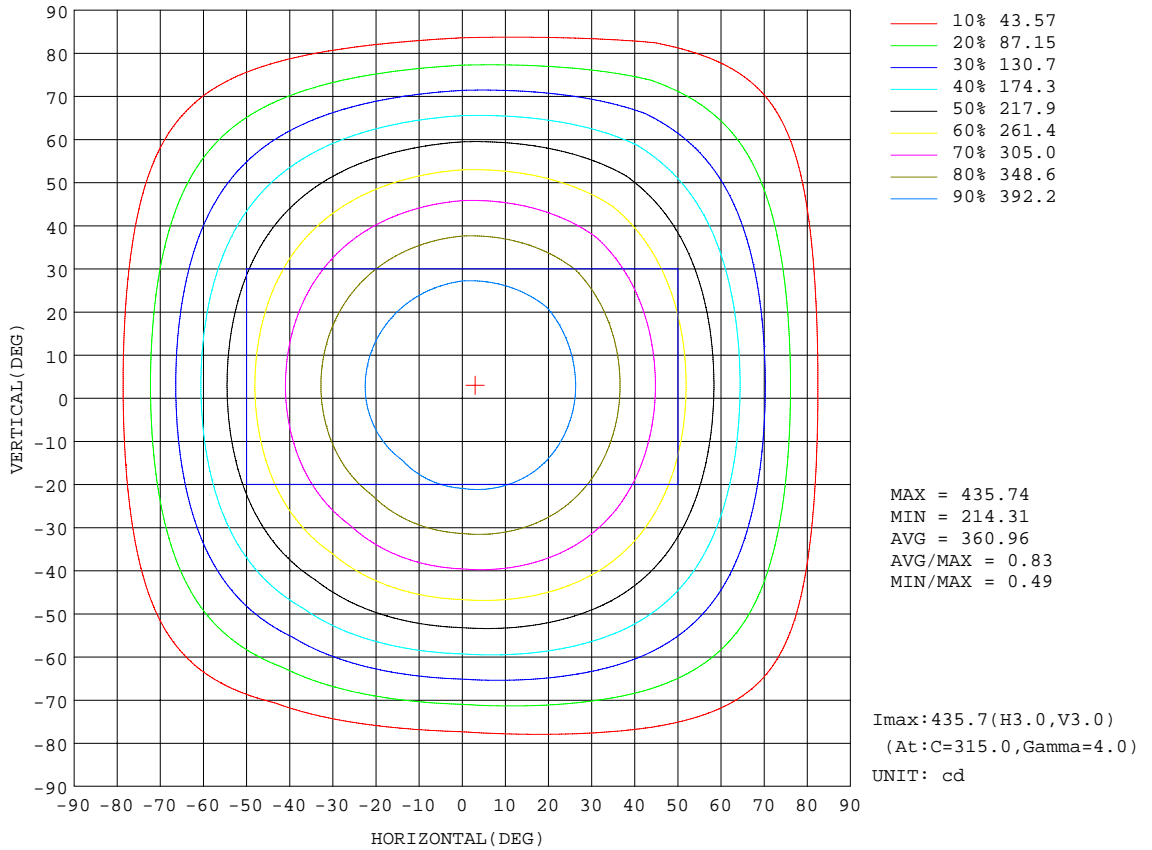
REFLECTANCE										
Ceiling	0.8	0.8	0.8	0.7	0.7	0.7	0.5	0.5	0.5	0
Walls	0.7	0.5	0.3	0.7	0.5	0.3	0.7	0.5	0.3	0
Working plane	0.2	0.2	0.2	0.2	0.2	0.2	0.2	0.2	0.2	0
ROOM INDEX	UTILIZATION FACTORS(PERCENT) $k(RI) \times RCR = 5$									
k = 0.60	57	46	39	57	46	39	55	45	38	32
0.80	67	56	48	66	55	48	65	55	48	41
1.00	76	65	57	75	64	57	72	66	57	49
1.25	83	72	65	82	72	65	79	70	64	57
1.50	88	78	71	86	77	71	83	75	70	62
2.00	95	86	80	93	85	79	90	83	78	70
2.50	99	91	85	97	90	84	93	87	82	74
3.00	102	95	90	100	94	89	96	91	86	78
4.00	106	100	96	104	99	94	99	95	92	83
5.00	109	104	100	106	102	98	102	98	95	86
ROOM INDEX	UF(total)									Direct
According to DIN EN 13032-2 2004			Suspended				SHRNOM = 1.25			

C Range: 0 - 360DEG
 C Interval: 45.0DEG
 Test Speed: HIGH
 Temperature:25.3DEG
 Operators:
 Test Date:2023-11-02Remarks:

γ Range: 0 - 180DEG
 γ Interval: 1.0DEG
 Test System:EVERFINE GO-2000A_V1 SYSTEM V2.0.276
 Humidity:65.0%
 Test Distance:9.100m [K=1.0000]

ISOCANDELA DIAGRAM

Test:U:120.7V I:0.1329A P:14.96W PF:0.9323 Lamp Flux:1247.86x1 lm		
NAME: 7.5吸顶灯-5000k	TYPE:	WEIGHT:
DIM.:	SPEC.:	SERIAL No.:
MFR.:	SUR.:	PROTECTION ANGLE:

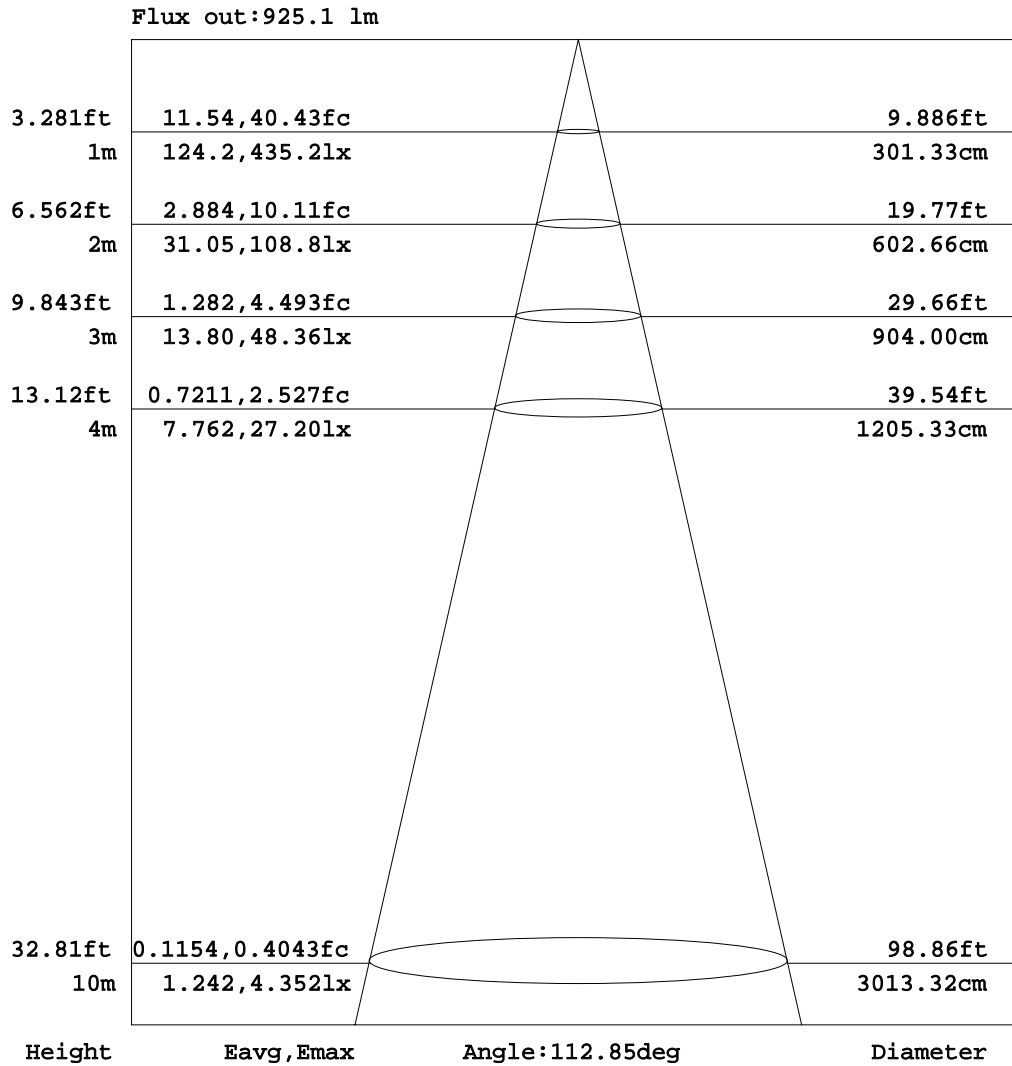


C Range: 0 - 360DEG
 C Interval: 45.0DEG
 Test Speed: HIGH
 Temperature: 25.3DEG
 Operators:
 Test Date: 2023-11-02 Remarks:

γ Range: 0 - 180DEG
 γ Interval: 1.0DEG
 Test System: EVERFINE GO-2000A_V1 SYSTEM V2.0.276
 Humidity: 65.0%
 Test Distance: 9.100m [K=1.0000]

AAI Figure

Test:U:120.7V I:0.1329A P:14.96W PF:0.9323 Lamp Flux:1247.86x1 lm		
NAME: 7.5吸顶灯-5000k	TYPE:	WEIGHT:
DIM.:	SPEC.:	SERIAL No.:
MFR.:	SUR.:	PROTECTION ANGLE:



Note: The Curves indicate the illuminated area and the average illumination when the luminaire is at different distance.

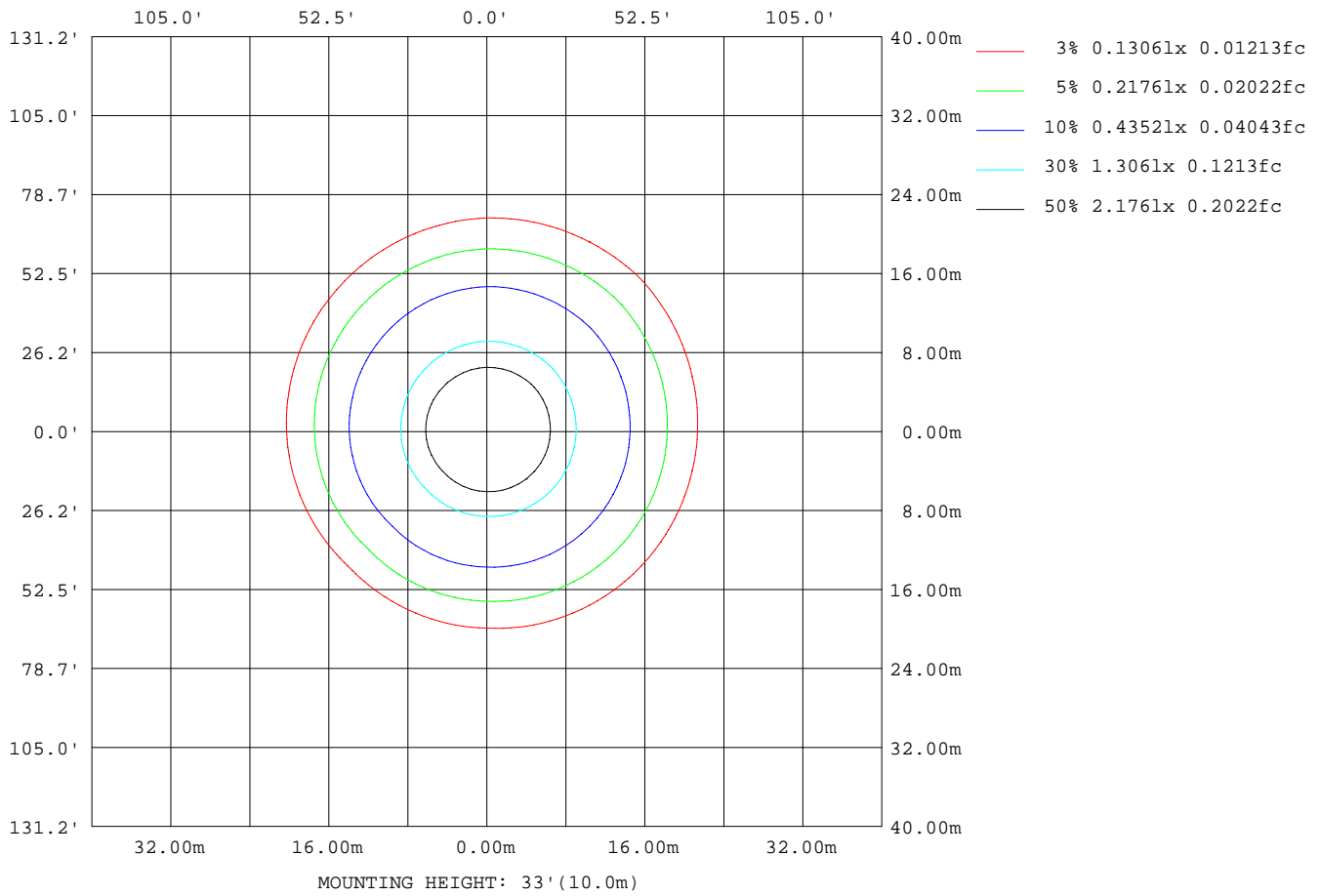
C Range: 0 - 360DEG
 C Interval: 45.0DEG
 Test Speed: HIGH
 Temperature: 25.3DEG
 Operators:

γ Range: 0 - 180DEG
 γ Interval: 1.0DEG
 Test System: EVERFINE GO-2000A_V1 SYSTEM V2.0.276
 Humidity: 65.0%
 Test Distance: 9.100m [K=1.0000]

Test Date: 2023-11-02 Remarks:

ISOLUX DIAGRAM

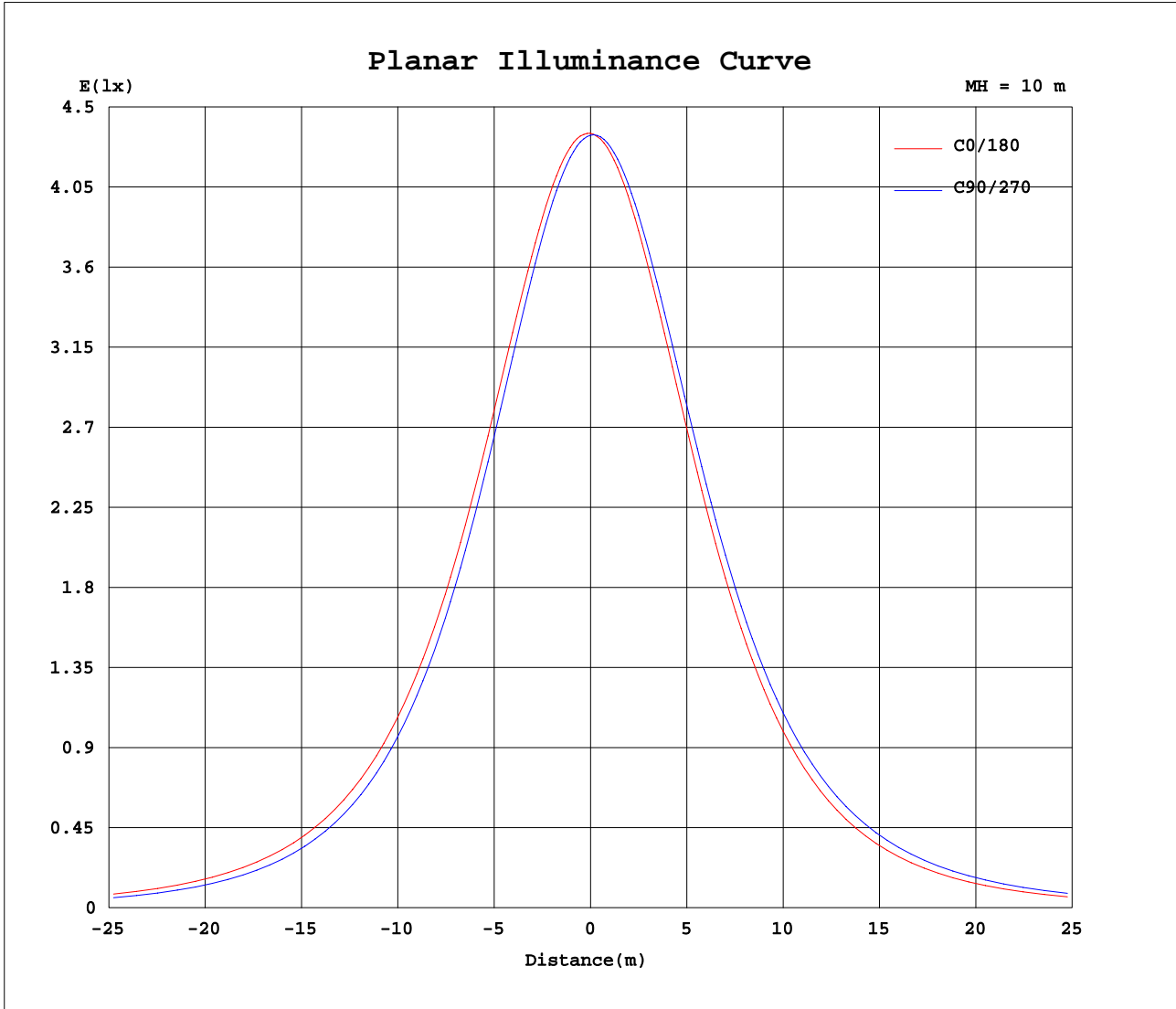
Test:U:120.7V I:0.1329A P:14.96W PF:0.9323 Lamp Flux:1247.86x1 lm		
NAME: 7.5吸顶灯-5000k	TYPE:	WEIGHT:
DIM.:	SPEC.:	SERIAL No.:
MFR.:	SUR.:	PROTECTION ANGLE:



C Range: 0 - 360DEG
 C Interval: 45.0DEG
 Test Speed: HIGH
 Temperature: 25.3DEG
 Operators:
 Test Date: 2023-11-02 Remarks:

γ Range: 0 - 180DEG
 γ Interval: 1.0DEG
 Test System: EVERFINE GO-2000A_V1 SYSTEM V2.0.276
 Humidity: 65.0%
 Test Distance: 9.100m [K=1.0000]

Planar Illuminance Curve



C Range: 0 - 360DEG

C Interval: 45.0DEG

Test Speed: HIGH

Temperature: 25.3DEG

Operators:

Test Date: 2023-11-02 Remarks:

γ Range: 0 - 180DEG

γ Interval: 1.0DEG

Test System: EVERFINE GO-2000A_V1 SYSTEM V2.0.276

Humidity: 65.0%

Test Distance: 9.100m [K=1.0000]

LUMINOUS DISTRIBUTION INTENSITY DATA

Test:U:120.7V I:0.1329A P:14.96W PF:0.9323 Lamp Flux:1247.86x1 lm		
NAME: 7.5吸顶灯-5000k	TYPE:	WEIGHT:
DIM.:	SPEC.:	SERIAL No.:
MFR.:	SUR.:	PROTECTION ANGLE:

Table--1

UNIT: cd

C(DEG)\γ (DEG)	0	45	90	135	180	225	270	315											
0	435	435	435	435	435	435	435	435											
5	434	432	430	430	431	433	435	436											
10	430	426	422	420	424	428	432	433											
15	422	417	411	408	414	419	425	427											
20	411	404	396	392	399	406	414	418											
25	395	387	377	373	382	390	400	404											
30	377	367	355	350	361	371	382	387											
35	355	344	331	325	336	348	361	367											
40	330	317	303	297	310	323	337	343											
45	303	289	273	266	280	295	310	317											
50	273	258	240	233	248	264	280	288											
55	240	224	205	197	214	230	248	256											
60	206	189	169	161	178	196	214	223											
65	169	152	132	123	141	159	178	187											
70	132	115	94.4	85.4	104	122	141	150											
75	95.0	78.5	59.0	50.5	67.5	85.1	104	112											
80	59.5	44.7	27.7	20.7	34.9	50.6	67.4	74.9											
85	27.9	15.5	2.57	0.12	7.76	20.4	32.9	41.2											
90	2.82	0.12	0.13	0.13	0.14	0.14	6.03	13.1											
95	0.16	0.16	0.13	0.19	0.19	0.13	0.15	0.13											
100	0.15	0.17	0.16	0.23	0.25	0.15	0.19	0.13											
105	0.18	0.24	0.18	0.28	0.32	0.22	0.25	0.18											
110	0.20	0.29	0.28	0.36	0.41	0.29	0.32	0.22											
115	0.27	0.37	0.33	0.42	0.47	0.37	0.38	0.31											
120	0.31	0.42	0.43	0.49	0.55	0.45	0.48	0.37											
125	0.37	0.50	0.47	0.56	0.62	0.50	0.55	0.44											
130	0.44	0.57	0.58	0.63	0.70	0.57	0.63	0.55											
135	0.52	0.63	0.62	0.69	0.75	0.64	0.68	0.60											
140	0.60	0.70	0.69	0.75	0.84	0.72	0.76	0.69											
145	0.64	0.76	0.74	0.82	0.89	0.79	0.82	0.73											
150	0.71	0.81	0.84	0.89	0.96	0.84	0.89	0.81											
155	0.77	0.87	0.87	0.94	1.01	0.90	0.96	0.85											
160	0.85	0.93	0.95	1.01	1.06	0.97	1.00	0.90											
165	0.91	0.98	0.98	1.07	1.10	1.00	1.06	0.95											
170	0.97	1.04	1.02	1.12	1.13	1.03	1.09	0.98											
175	1.01	1.07	1.04	1.12	1.14	1.09	1.12	1.01											
180	1.11	1.13	1.12	1.09	1.13	1.12	1.12	1.06											

C Range: 0 - 360DEG

C Interval: 45.0DEG

Test Speed: HIGH

Temperature:25.3DEG

Operators:

Test Date:2023-11-02Remarks:

γ Range: 0 - 180DEG

γ Interval: 1.0DEG

Test System:EVERFINE GO-2000A_V1 SYSTEM V2.0.276

Humidity:65.0%

Test Distance:9.100m [K=1.0000]